

B3=B4 1e30
PLANTA
ESC 1:25

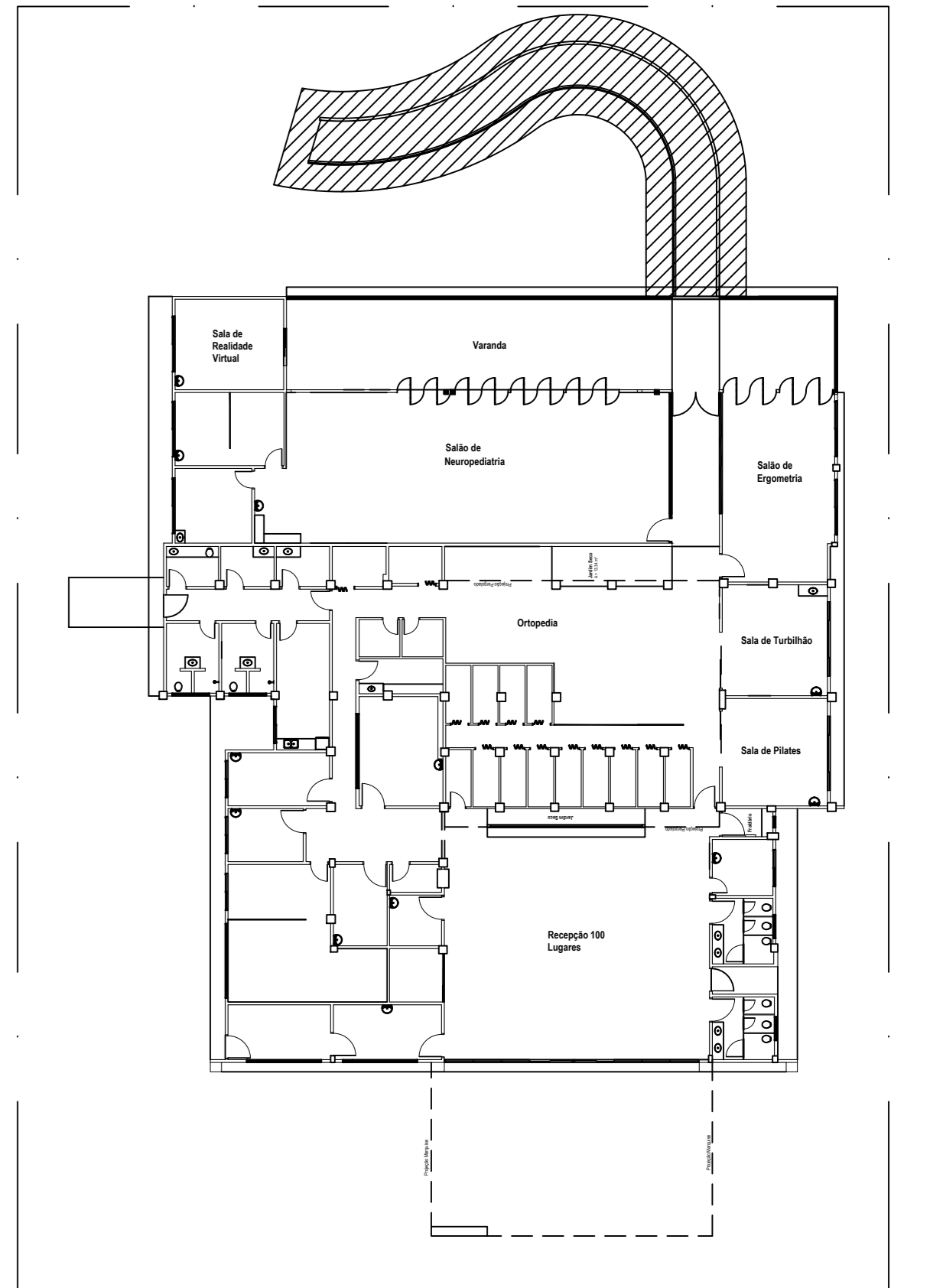
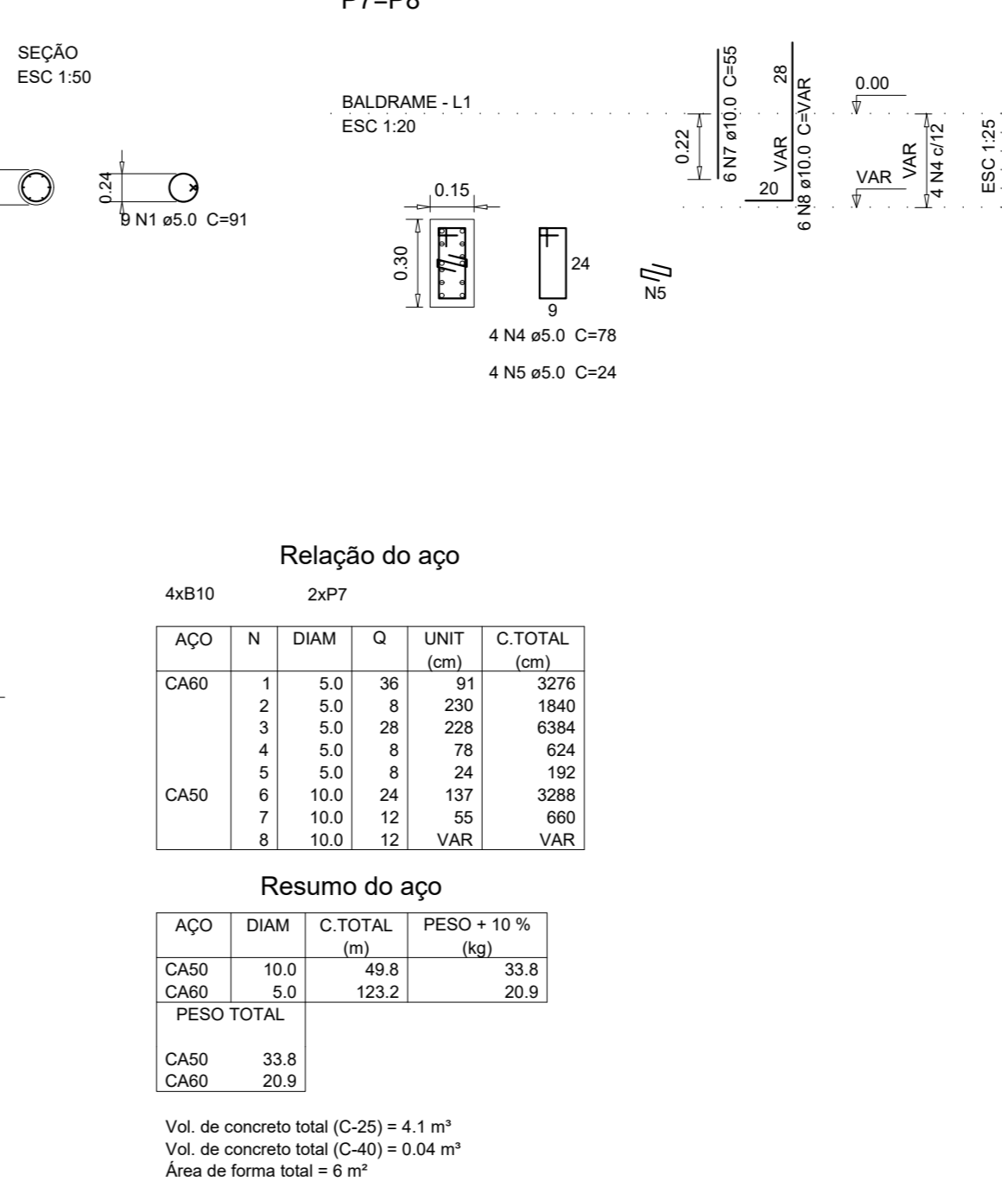
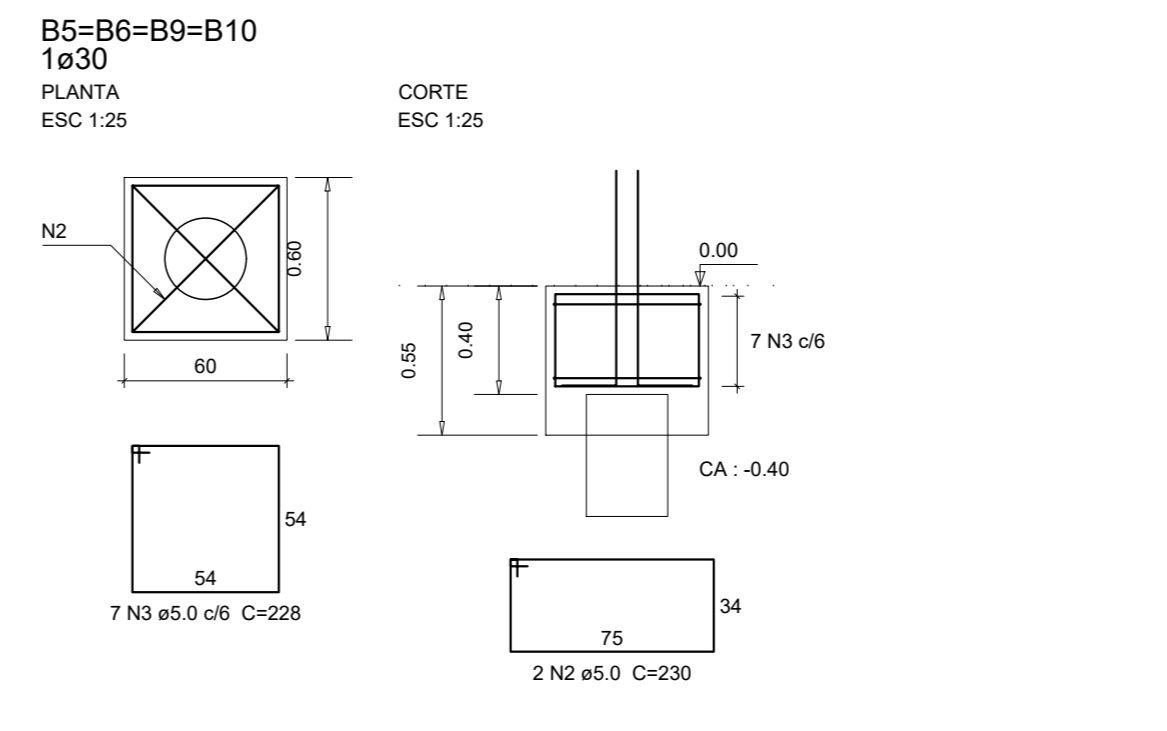
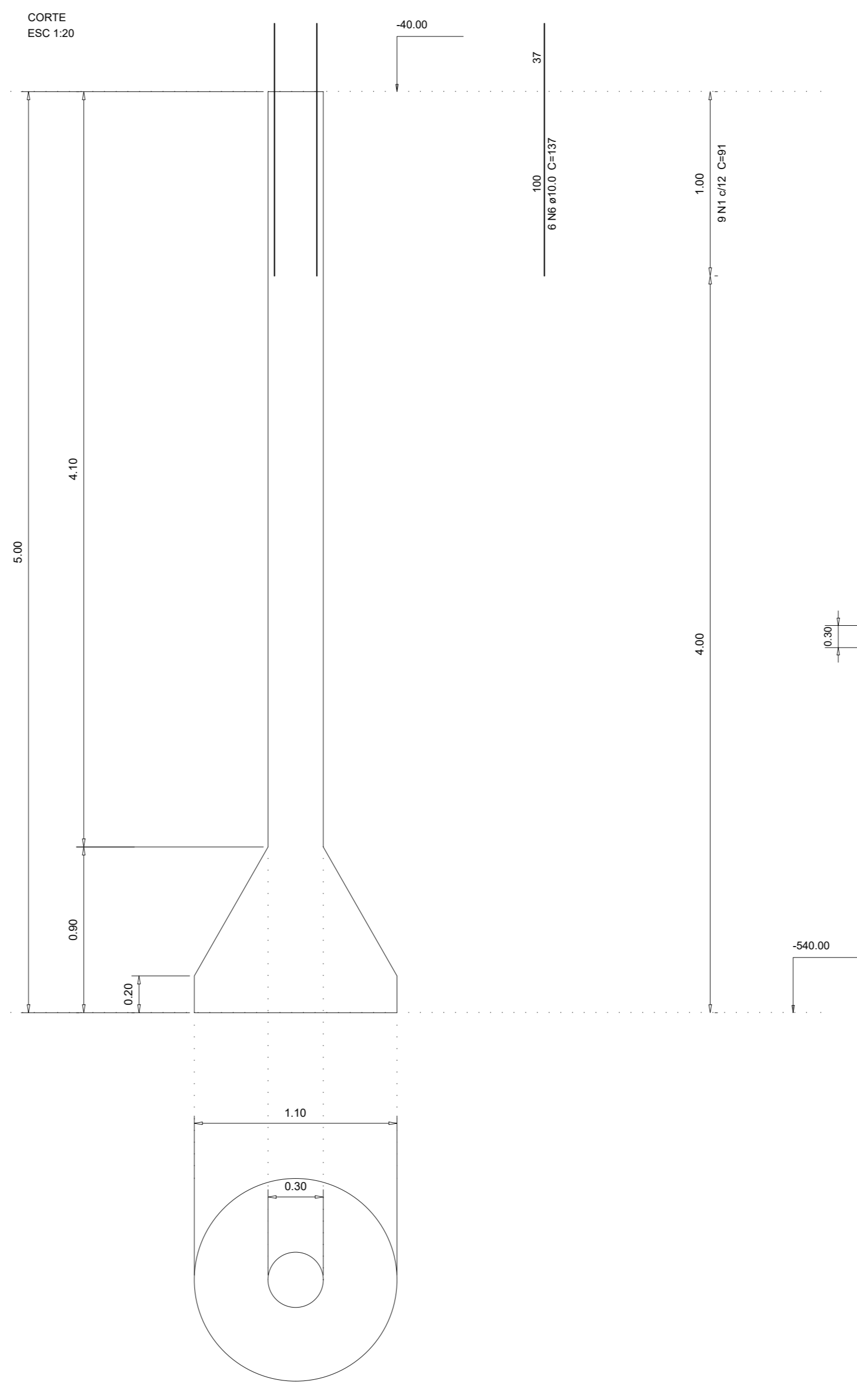
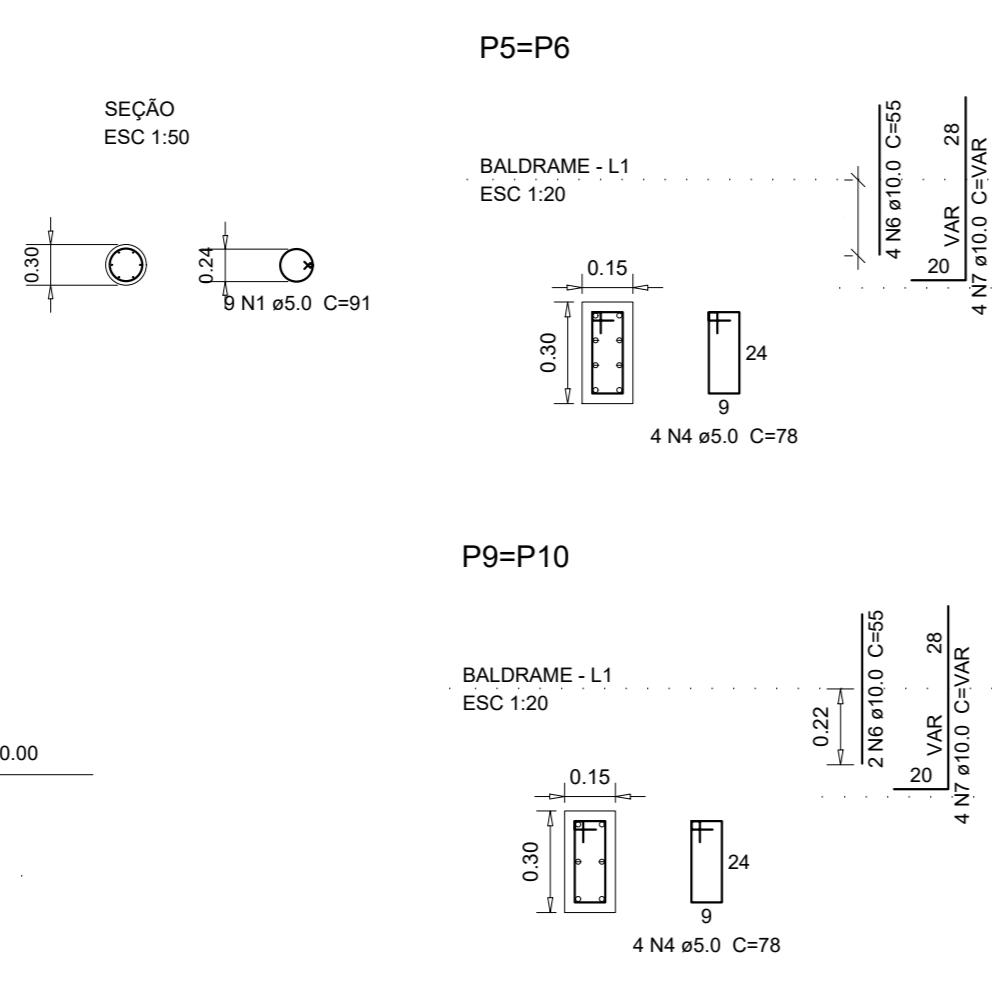
Relação do aço

CAPO	N	DIAM	Q	UNID	C TOTAL
1	5.0	18	91	cm	1638
2	5.0	4	230	cm	920
3	5.0	10	228	cm	2280
4	5.0	16	78	cm	1248
5	10.0	12	137	cm	1644
6	10.0	12	50	cm	600
7	10.0	16	VAR	VAR	VAR

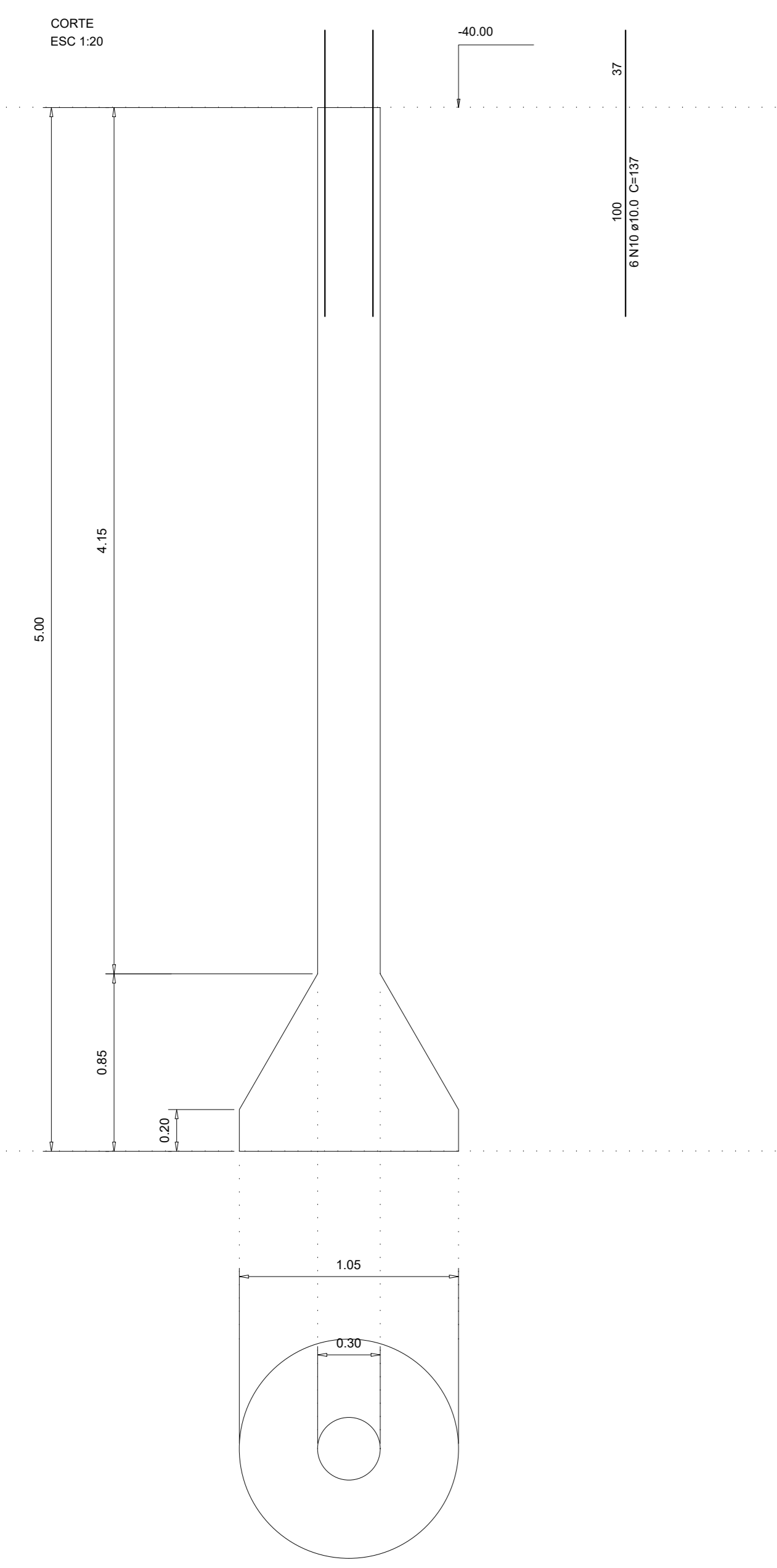
Resumo do aço

CAPO	DIAM	C TOTAL	PESO + 10%
CA50	10.0	36.8	25
CA60	5.0	60.9	10.3
PESO TOTAL			
CA50		36.8	
CA60		10.3	

Vol. de concreto total (C-25) = 1.53 m³
Vol. de concreto total (C-40) = 1.07 m³
Área de forma total = 4.08 m²



ESQUEMA REMISSIVO SEM ESCALA



B7=B8 1e30
PLANTA
ESC 1:25

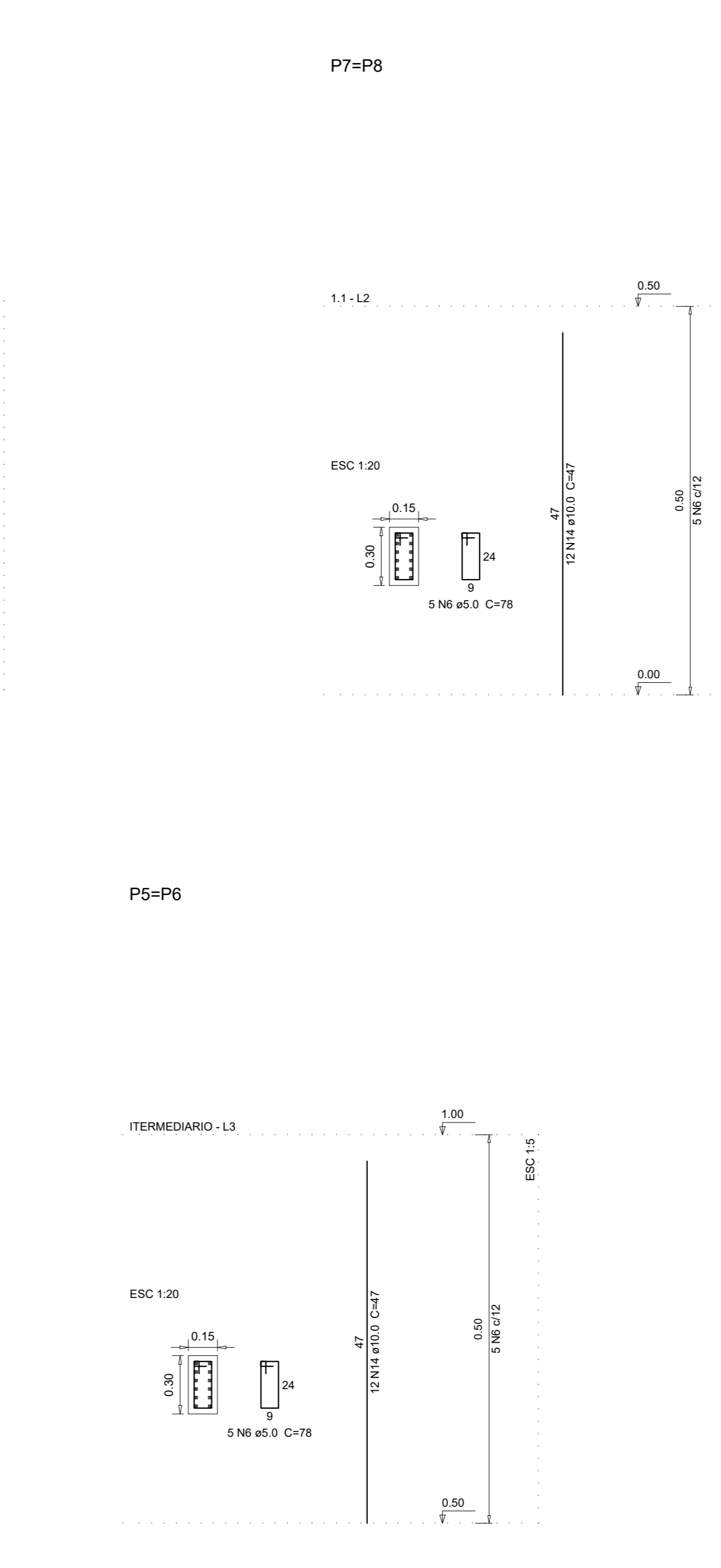
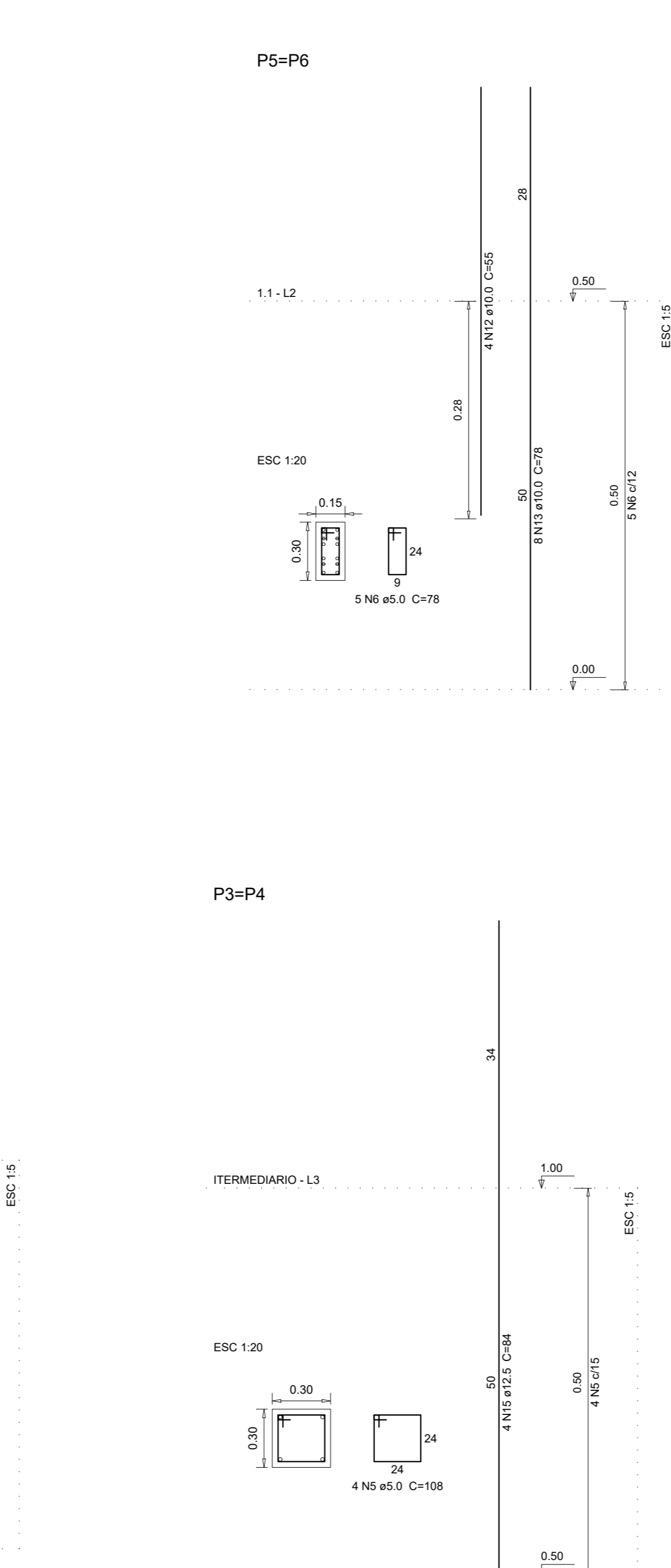
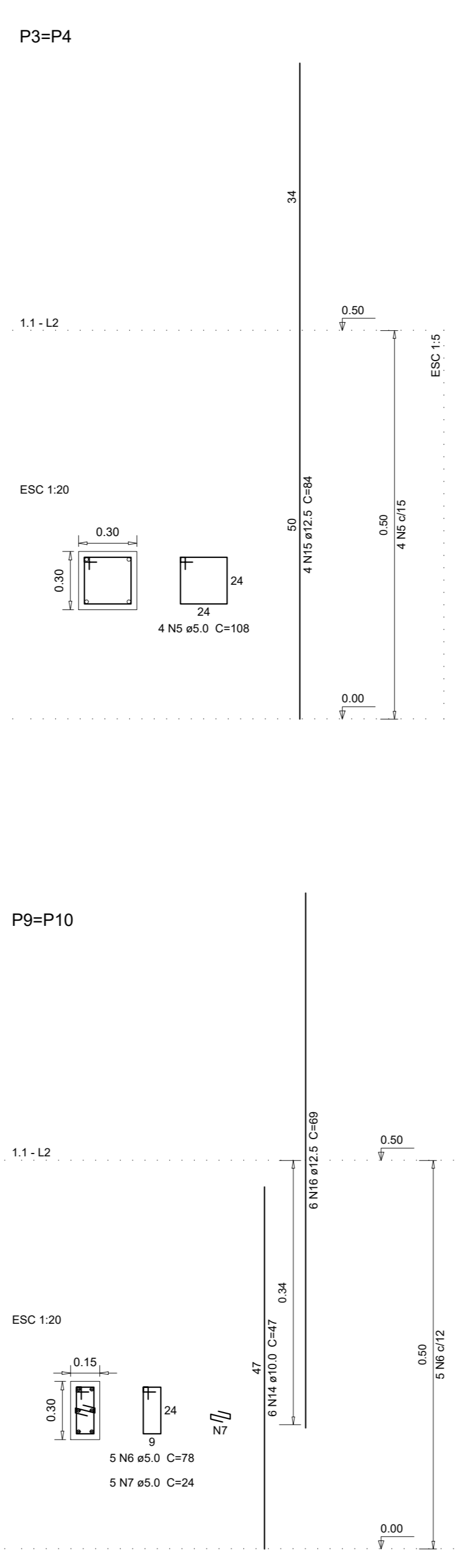
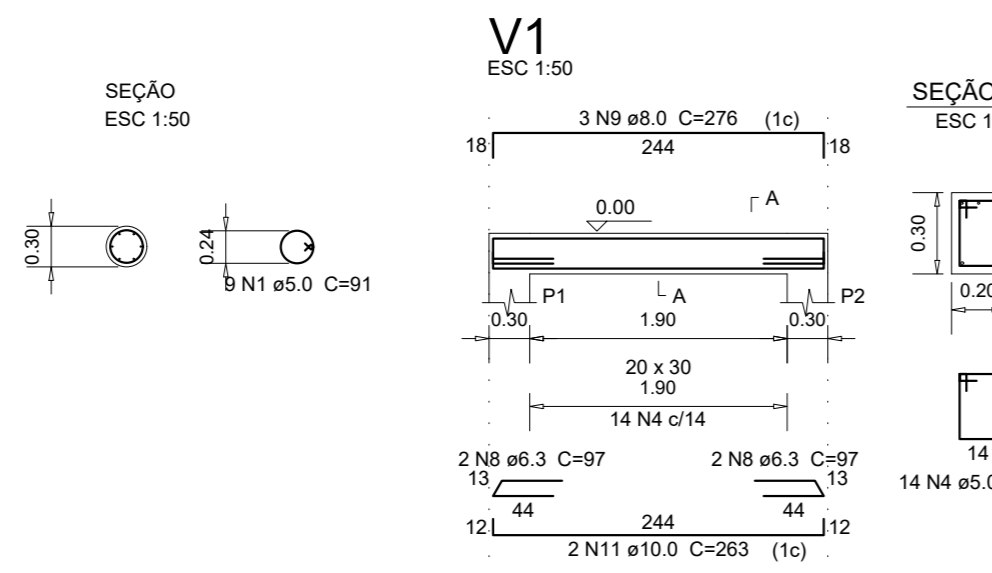
Relação do aço

CAPO	N	DIAM	Q	UNID	C TOTAL
1	5.0	18	91	cm	1638
2	5.0	4	230	cm	920
3	5.0	10	228	cm	2280
4	5.0	16	78	cm	1248
5	10.0	12	137	cm	1644
6	10.0	12	50	cm	600
7	10.0	16	VAR	VAR	VAR

Resumo do aço

CAPO	DIAM	C TOTAL	PESO + 10%
CA50	10.0	36.8	25
CA60	5.0	60.9	10.3
PESO TOTAL			
CA50		36.8	
CA60		10.3	

Vol. de concreto total (C-25) = 1.53 m³
Vol. de concreto total (C-40) = 1.07 m³
Área de forma total = 4.08 m²



Relação do aço

CAPO	N	DIAM	Q	UNID	C TOTAL
1	5.0	18	91	cm	1638
2	5.0	4	230	cm	920
3	5.0	10	228	cm	2280
4	5.0	16	78	cm	1248
5	10.0	12	137	cm	1644
6	10.0	12	50	cm	600
7	10.0	16	VAR	VAR	VAR

Resumo do aço

CAPO	DIAM	C TOTAL	PESO + 10%
CA50	10.0	49.8	33.8
CA60	5.0	123.2	20.9
PESO TOTAL			
CA50		49.8	
CA60		20.9	

Vol. de concreto total (C-25) = 1.53 m³
Vol. de concreto total (C-40) = 1.07 m³
Área de forma total = 10.64 m²

PROJETO ESTRUTURAL

VILA SÃO JOSÉ BENTO COTTOLENGO
AV. CEL. GABRIEL ALVES DE CARVALHO, 140, BARRIO SANTO ANTONIO - TRINDADE-GO - CEP: 75.388-900

PROPRIETÁRIO: VILA SÃO JOSÉ BENTO COTTOLENGO

AUTOR DO PROJETO: ENG. CIVIL DENIS FRANCISCO DOS SANTOS - CREA 21.688/GO

RESPONSÁVEL TÉCNICO: ALEXANDER (02) 9802-6525

CONTEÚDO: UNIDADE DE FISIOTERAPIA (ANTIGA UNIDADE SANTO AFONSO) - DETALHE DA RAMPA DE FUNDO

ÁREA DO TERRENO: 321.212,09 m² **ÁREA DA EDIFICAÇÃO:** 1.509,62 m²

PROJETO: METROS **INDICADA:** TELA **12/12**

DATA: MAIO/2020